

Sandy McTire Coupons

by Don Robb



My last listing of Sandy McTire coupons appeared in the October 1992 CTCCC Newsletter. Since then I have received information about coupons to be added. My thanks to Brian Bea, Dick Dunn, Roger FOX and Mike Hollingshead. I am now publishing a revised and perhaps a final listing.

Four coupons have been added as follows:

MP-1B: Bond Paper

| | | | | | |
|---------------------|------|------|-------|------------|-------|
| 2 1/2 + 2 1/2 cents | Gray | 5 C | Green | Small Seal | Green |
| 5 + 5 cents | Gray | 10 A | Blue | Small Seal | Blue |
| 10 + 10 cents | Gray | 20 C | Red | Clear | Black |

MP-2B: Bond Paper

| | | | | | |
|---------------|-------|----|--------|------------|-----|
| 15 + 15 cents | Black | 30 | Yellow | Small Seal | Red |
|---------------|-------|----|--------|------------|-----|

In addition to the above, I have been made aware of two Mor-Power coupons that do not have Serial Numbers. Given the fact that all Mor-Power Coupons except these two do have Serial Numbers, it would seem to me that the omission of the Serial Numbers on these two coupons is the result of a printing error. The two coupons are as follows:

MP-1B: Bond Paper

| | | | | | |
|---------------------|------|---|-------|------------|-------|
| 2 1/2 + 2 1/2 cents | Gray | 5 | Green | Small Seal | Green |
|---------------------|------|---|-------|------------|-------|

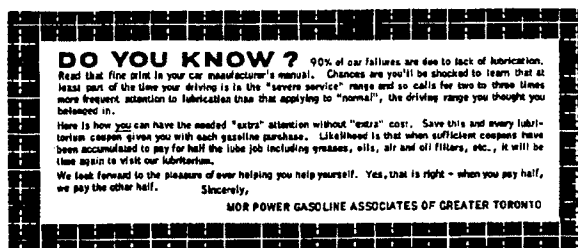
MP-2C: Cheque Paper

| | | | | | |
|---------------|-------|----|--------|-------|-------|
| 15 + 15 cents | Black | 30 | Yellow | Clear | Black |
|---------------|-------|----|--------|-------|-------|

This listing includes all of the Sandy McTire coupons known to date. Please remember that I remain interested in hearing from any of our members that can provide new information. Also I am always interested in trading coupons or purchasing any Sandy McTire coupons that you wish to sell. Please write or call me. My address is as follows:

Don R. Robb
P.O. Box 724
Waterloo Ontario
N2J 4C2
Tel.: (519) 888-9655

MP-1: Mor-Power Gas Bars - "DO YOU KNOW"



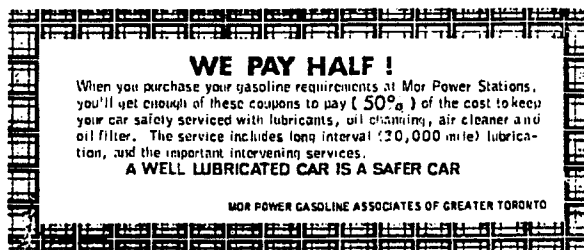
- Most coupons are printed on regular Bond paper
- Some are printed on Security Bond Cheque paper
- **OBVERSE:** Bond paper coupons: Plaid Border around a "Yellow Panel"
Cheque paper coupons: Plaid Border around a "Gray Panel"
All coupons have two Red Serial Numbers
"Good only At Our Toronto And suburban Lubritoriums"
All have a "Gray" Denomination Number on "Panel"
- **REVERSE:** All have "DO YOU KNOW?" statement
Most have a "Small Seal" Underprint
Some have no Underprint, ie. "Clear"

| OBVERSE | | | | REVERSE | | |
|--------------------|------|--------|-------|------------|------------|--------|
| DENOMINATION | | PREFIX | COLOR | UNDERPRINT | COLOR | |
| MP-1B: Bond paper: | | | | | | |
| 2 1/2+2 1/2 cents | Gray | 5 | A | Green | Clear | Black |
| | Gray | 5 | A | Green | Clear | Green |
| | Gray | 5 | A | Green | Small seal | Green |
| | Gray | 5 | AA | Green | Small Seal | Green |
| | Gray | 5 | C | Green | Small Seal | Green |
| | Gray | 5 | D | Green | Small Seal | Green |
| 5 + 5 cents | Gray | 10 | A | Blue | Small Seal | Blue |
| | Gray | 10 | B | Blue | Clear | Black |
| | Gray | 10 | B | Blue | Clear | Blue |
| | Gray | 10 | B | Blue | Small Seal | Blue |
| | Gray | 10 | B | Blue | Small Seal | Violet |
| | Gray | 10 | E | Blue | Small Seal | Blue |
| | Gray | 10 | W | Blue | Small Seal | Blue |
| 10+10 cents | Gray | 20 | C | Red | Small seal | Red |
| | Gray | 20 | C | Red | Clear | Red |
| | Gray | 20 | C | Red | Clear | Black |
| | Gray | 20 | F | Red | Small Seal | Red |

MP-1C: Cheque Paper:

| | | | | | | |
|-------------------|------|----|---|-------|------------|-------|
| 2 1/2+2 1/2 cents | Gray | 5 | D | Green | Small Seal | Green |
| 5+5 cents | Gray | 10 | E | Blue | Small Seal | Blue |
| 10+10 cents | Gray | 20 | F | Red | Small Seal | Red |

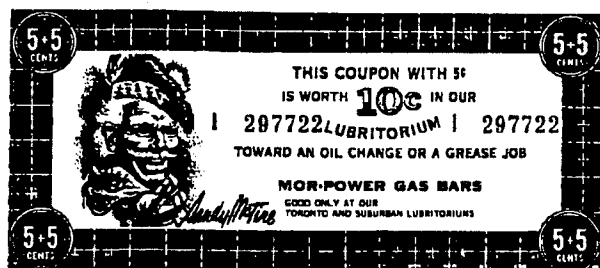
MP-2: Mor-Power Gas Bars - "WE PAY HALF"



- Some coupons are printed on regular Bond paper
- Most are printed on Security Bond Cheque paper
- **OBVERSE:** Bond paper coupons: Plaid border around a "Yellow Panel"
Cheque paper coupons: Plaid Border around a "Gray Panel"
All coupons have two Red Serial Numbers
"Good Only At Our Toronto And Suburban Lubratoriums"
Most have a "Gray" Denomination Number
Some have a "Black" Denomination Number
- **REVERSE:** All have "WE PAY HALF!" statement
All coupons on Bond paper have a "Small Seal" Underprint
All on Cheque paper have no Underprint, ie. "Clear"

| OBVERSE | | | | | REVERSE | |
|-----------------------------|--------|----|-------|--------|------------|-------|
| DENOMINATION | PREFIX | | COLOR | | UNDERPRINT | COLOR |
| MP-2B: Bond paper: | | | | | | |
| 2 1/2+2 1/2 cents | Gray | 5 | D | Green | Clear | Green |
| 5+5 cents | Gray | 10 | B | Blue | Small Seal | Blue |
| | Gray | 10 | I | Blue | Small Seal | Blue |
| 15+15 cents | Black | 30 | B | Yellow | Small Seal | Red |
| | Black | 30 | D | Yellow | Small Seal | Red |
| | Black | 30 | I | Yellow | Small Seal | Red |
| 20+20 cents | Black | 40 | D | Rose | Small Seal | Rose |
| MP-2C: Cheque Paper: | | | | | | |
| 2 1/2+2 1/2 cents | Gray | 5 | D | Green | Clear | Green |
| | Gray | 5 | F | Green | Clear | Green |
| | Gray | 5 | W | Green | Clear | Green |
| 5+5 cents | Gray | 10 | C | Blue | Clear | Blue |
| | Gray | 10 | D | Blue | Clear | Blue |
| | Gray | 10 | E | Blue | Clear | Blue |
| | Gray | 10 | H | Blue | Clear | Blue |
| | Gray | 10 | I | Blue | Clear | Blue |
| 10+10 cents | Gray | 20 | F | Red | Clear | Red |
| | Gray | 20 | J | Red | Clear | Red |
| 15+15 cents | Black | 30 | B | Yellow | Clear | Black |
| 20+20 cents | Black | 40 | D | Rose | Clear | Rose |
| | Black | 40 | D | Yellow | Clear | Rose |

MP-3: Mor-Power Gas Bars - "FREE MEMBERSHIP"



All coupons are printed on regular Bond paper

- **OBVERSE:** Plaid Border around a "Yellow Panel"
All Coupons have two Red Serial Numbers
"Good Only At Our Toronto And Suburban Lubratoriums"
Most have a "Black" Denomination Number on Yellow Panel
Some have a "Gray" Denomination Number on Yellow Panel
- **REVERSE:** All have "FREE MEMBERSHIP" "AT CANADIAN TIRE GAS STATIONS"
Most have a "Small Seal" Underprint
Some have no Underprint, ie. "Clear"

| OBVERSE | | | | | REVERSE | |
|---------------------------|--------|----|---|--------|------------|-------|
| DENOMINATION | PREFIX | | | COLOR | UNDERPRINT | COLOR |
| MP-3B: Bond paper: | | | | | | |
| 5+5 cents | Gray | 10 | I | Blue | Small Seal | Red |
| | Gray | 10 | I | Blue | Clear | Blue |
| 10+10 cents | Gray | 20 | F | Red | Small Seal | Red |
| 15+15 cents | Black | 30 | B | Yellow | Small Seal | Green |
| | Black | 30 | B | Yellow | Small Seal | Red |
| 20+20 cents | Black | 40 | D | Rose | Small Seal | Red |
| | Black | 40 | D | Rose | Clear | Red |
| | Black | 40 | I | Rose | Clear | Red |

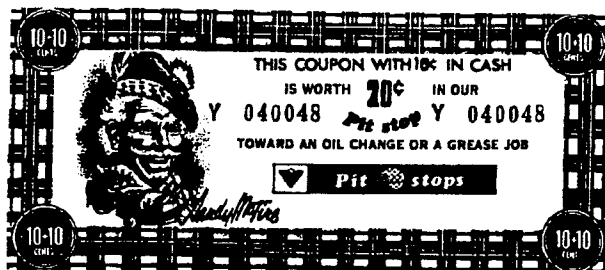
GB-1: Canadian Tire Gas Bars



- All coupons are printed on regular Bond paper
- **OBVERSE:**
 - Plaid Border around a "Yellow panel"
 - All coupons have two Red Serial Numbers
 - "Good Only At Our Toronto And Suburban Lubratoriums"
 - Some have a "Black" Denomination Number on Yellow Panel
 - Some have a "Gray" Denomination Number on Yellow Panel
- **REVERSE:**
 - All have "FREE MEMBERSHIP" "AT CANADIAN TIRE GAS STATIONS"
 - Most have a "Large Seal" Underprint
 - Some have no Underprint, ie. "Clear"

| OBVERSE | | | | | REVERSE | |
|---------------------------|--------|----|-------|--------|------------|-------|
| DENOMINATION | PREFIX | | COLOR | | UNDERPRINT | COLOR |
| GB-1B: Bond paper: | | | | | | |
| 5+5 cents | Gray | 10 | D | Blue | Large seal | Blue |
| | Gray | 10 | I | Blue | Large seal | Blue |
| | Gray | 10 | I | Blue | Clear | Blue |
| 10+10 cents | Gray | 20 | F | Red | Large Seal | Red |
| 15+15 cents | Black | 30 | B | Yellow | Clear | Green |
| | Black | 30 | D | Yellow | Large Seal | Green |
| | Black | 30 | E | Yellow | Large Seal | Green |
| | Black | 30 | E | Yellow | Clear | Green |
| 20+20 cents | Black | 40 | D | Rose | Large Seal | Rose |

PS-1: Pit Stops - With Serial Numbers



- All coupons are printed on regular Bond paper
- **OBVERSE:** Plaid Border around a "Yellow Panel"
All coupons have two Red serial Numbers
All have a "Black" Denomination Number on Yellow Panel
- **REVERSE:** All have "FREE MEMBERSHIP" "at Pit stops"
Most have a "Helmet" Underprint
Some have a "Large Seal" Underprint
Some have no Underprint, ie. "Clear"

| OBVERSE | | | | | REVERSE | |
|--------------------|---------|--------|---|--------|------------|-------|
| DENOMINATION | | PREFIX | | COLOR | UNDERPRINT | COLOR |
| PS-1B: Bond paper: | | | | | | |
| 2 1/2+2 1/2 cents | Black | 5 | C | Green | Helmet | Green |
| | Black | 5 | D | Green | Helmet | Green |
| | Black | 5 | F | Green | Helmet | Green |
| 5+5 cents | Black | 10 | I | Blue | Helmet | Blue |
| | Black | 10 | Z | Blue | Helmet | Blue |
| 10+10 cents | Black | 20 | B | Red | Large Seal | Red |
| | # Black | 20 | B | Red | Helmet | Red |
| | Black | 20 | F | Red | Large Seal | Red |
| | # Black | 20 | Y | Red | Helmet | Red |
| 15+15 cents | Black | 30 | D | Yellow | Helmet | Green |
| | Black | 30 | E | Yellow | Clear | Green |
| | Black | 30 | H | Yellow | Helmet | Green |
| 20+20 cents | Black | 40 | D | Rose | Helmet | Rose |

The "2" is overprinted on "1"

PS-2: Pit Stops - No Serial Numbers



- All coupons are printed on regular Bond paper
- OBVERSE: Plaid Border around a "Yellow Panel"
No Serial Numbers
All have a "Black" Denomination Number on Yellow Panel
- REVERSE: All have "FREE MEMBERSHIP" "at Pit stops"
Most have a "Helmet" Underprint
Some have a "Large Seal" Underprint
Some have no Underprint, ie. "Clear"

| OBVERSE | | | | | REVERSE | |
|---------------------------|---------|----|------|--------|------------|-------|
| DENOMINATION | PREFIX | | | COLOR | UNDERPRINT | COLOR |
| PS-2B: Bond paper: | | | | | | |
| 2 1/2+2 1/2 cents | Black | 5 | None | Green | Helmet | Green |
| 5+5 cents | Black | 10 | None | Blue | Helmet | Blue |
| 10+10 cents | Black | 20 | None | Red | Helmet | Red |
| | # Black | 20 | None | Red | Helmet | Red |
| | Black | 20 | None | Red | Clear | Red |
| | Black | 20 | None | Red | Large Seal | Red |
| 15+15 cents | Black | 30 | None | Yellow | Helmet | Green |
| 20+20 cents | Black | 40 | None | Rose | Helmet | Rose |

The "2" is overprinted on "1"